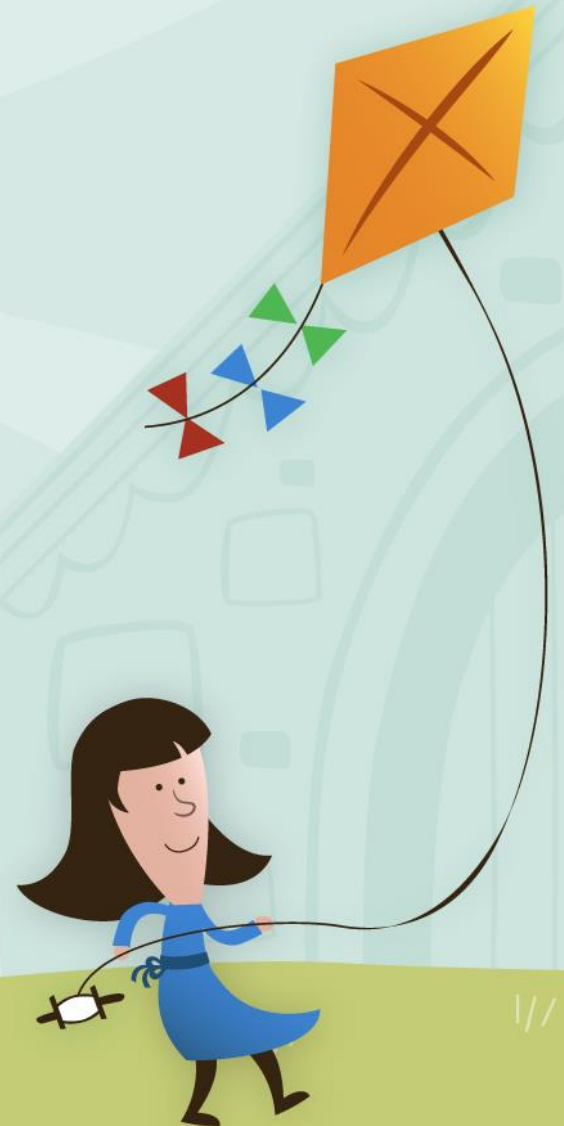


# Children's Dyslexia Center of Southern Illinois

*Impacting the Lives of Children*



# The Challenge of Dyslexia



- A small boy sits at his desk, looking down at his open book as his classmates read aloud. He wrinkles his forehead and squints his eyes but the letters and words he sees are jumbled, twisted, and sense-less. He grips the book tighter, holds his breath and makes a silent wish that the teacher will not call on him ...
- This child has dyslexia, a learning disability that affects 1 out of every 5 children. He needs help to overcome it before it sets him back emotionally as well as educationally. Where will he get the help he needs?



# Children's Dyslexia Center Can Help!

Our Mission	Our Success
1) Tutor Children	We provide one of the most effective professional reading and written language instruction programs to children with dyslexia; that the Public Schools <u>can't</u> .
	Children are tutored one-on-one, twice a week after regular school hours
	Curriculum tailored to each individual child, and progress is made in small, readily quantifiable steps.
	Children will improve their grade reading level by one or two grades in 2 years.
	Tutoring is provided at no charge to children, regardless of economic status, from early elementary through high school who have reading disabilities.



***“Tell me, and I forget. Teach me, and I remember. Involve me, and I learn!” ~ Benjamin Franklin***



# Children's Dyslexia Center Can Help! (Cont'd)

Our Mission	Our Success
2) Train Tutors	Our accredited program offers free training for individuals to receive certification as tutors in the Orton-Gillingham approach.
	The training program is accredited by the International Multisensory Structured Language Education Council
	School teachers receive training and can potentially earn continuing education credits to become certified tutors.
3) Clinical Research	Advance scientific knowledge of dyslexia through support of clinical research to improve today's standards and tomorrow's care.
Overall	The positive impact of early intervention on the lives of these children and their families is enormous, and inspires our commitment to this program.



***“Each day when I awake I know I have one more chance to make a difference in someone’s life” James Mann Author***



# Why we need your help!



- 20 students are currently enrolled.
- 15 children are on the waiting list and this number continues to grow.
- Costs \$5,000 a year per child.
- Program is 2 years.
- Due to the state of our economy, there is greater competition for fundraised dollars and we have had cuts from our corporation.



# How Can You Help?

You can immediately impact the lives of 20+ children residing in our community

Level	Amount	Impact	Recognition
Platinum	\$5,000	1 child sponsored for a year	Receive 9 X 12 plaque, and banner at all Children's Dyslexia Center events in 2014/15
Gold	\$1,000	40 tutoring sessions	Receive 8 X 10 plaque, and banner at all Children's Dyslexia Center events in 2014/15
Silver	\$500	20 tutoring sessions	Receive 5 X 10 plaque, and half banner at all Children's Dyslexia Center events in 2014/15
Bronze	\$250	10 tutoring sessions	Receive 4 X 10 plaque
1 Session	\$25	1 tutoring session	Thank You Letter



- Office Supplies donations & Volunteering are welcomed!
- Donations are Tax Deductible, as we're 501(c)3 Non-Profit Org



# Serving Our Community

- The CDC has been located in Belleville since 2002.
- Over 12 years, has provided over 14,000 individual lessons and trained over 60 tutors
- Serving over 30 communities:
  1. Addieville
  2. Belleville
  3. Bethalto
  4. Breese
  5. Burksville
  6. Caseyville
  7. Columbia
  8. East St. Louis
  9. Fairview Heights
  10. Freeburg
  11. Glen Carbon
  12. Godfrey
  13. Granite City
  14. Greenville
  15. Highland
  16. Hoyleton
  17. Lebanon
  18. Lenzburg
  19. Marissa
  20. Maryville
  21. Mascoutah
  22. Millstadt
  23. Nashville
  24. New Athens
  25. O'Fallon
  26. Radom
  27. Red Bud
  28. Ruma
  29. Shiloh
  30. Smithton
  31. Swansea
  32. Troy
  33. Waterloo
  34. Woodriver
  35. *Arnold in Missouri*



# Contact Information

- Center Director: Michele Johnson  
Phone/Fax: (618) 235-9392  
E-mail: [director@sril092.com](mailto:director@sril092.com)
- Board of Governors Chair: Brian Brown  
Cell 618-210-3475  
E-mail: [bbrown7173@aol.com](mailto:bbrown7173@aol.com)
- Please visit our website for more information:  
[www.readwithdyslexia.org](http://www.readwithdyslexia.org)



To open Max's Story  
you must exit out of  
the slideshow then  
click on the file.

## Donation Information:

Checks can be made to “Children’s Dyslexia Center  
– Southern Illinois” and mailed to:

Children’s Dyslexia Center - Southern Illinois  
c/o Treasurer  
1549 Frank Scott Parkway West,  
Belleville, IL 62223

[Play Video](#)





Thank You!!!

